

Proposed Bishop's Hull Sensory Trail

Presentation to the Parish Council Annual Meeting

Thursday April 4th 2024

What is a sensory trail?

- A sensory trail is all about stimulating and engaging the five basic senses of **sight, smell, sound, touch** and **taste**.
- It encourages you to become more aware of your surroundings and your response to them.
- Often thought of as vehicles to stimulate the senses, especially for children with special needs.
- But we all respond to sensory stimulants – we have different needs at different times.

Sight – brightly coloured flowers and fruits



Smell – many scented plants, different fragrances,
different times of the day and year.....



Touch – texture, so often overlooked. Soft and wooly, prickly, tough and fibrous.....



Taste – herbs and fruits



Sound, from the rustling of leaves to the insects collecting pollen.....

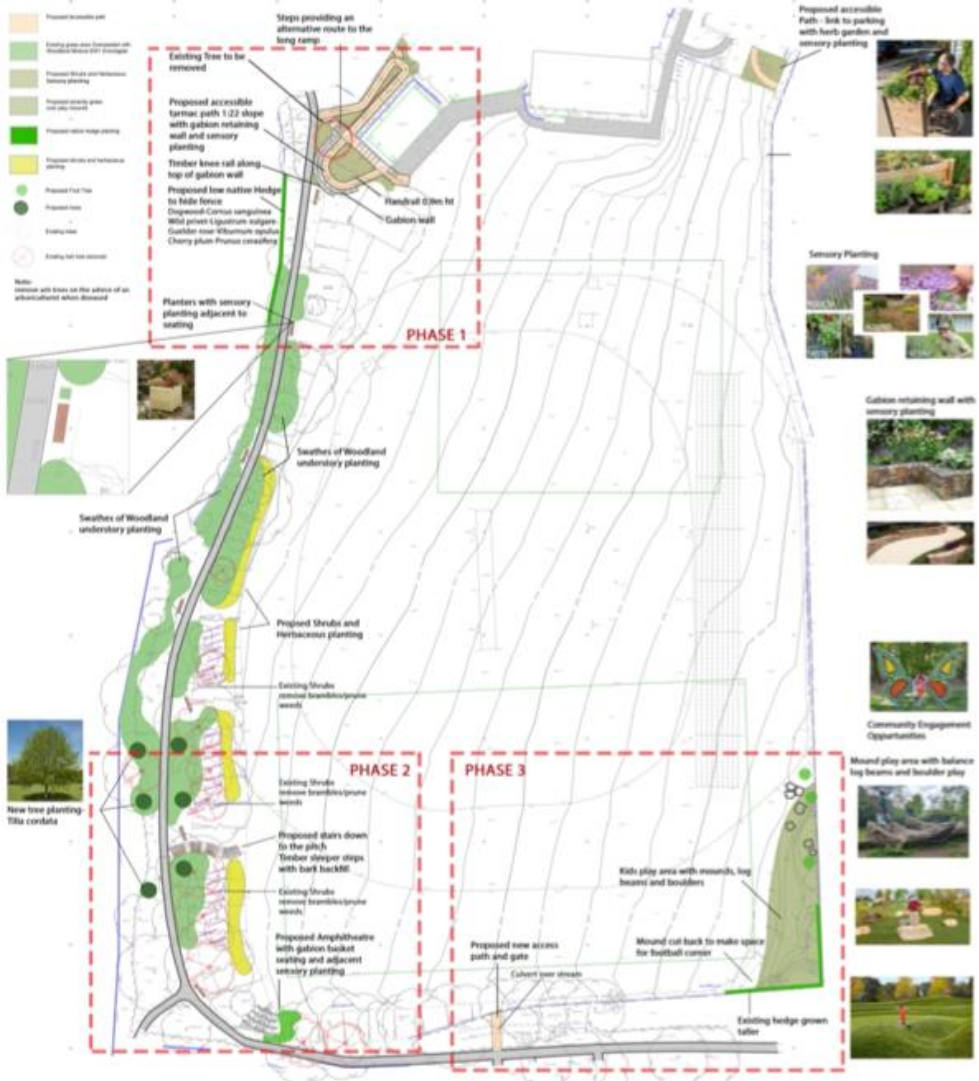


BISHOPS HULL PLAYING FIELD

KEY

- Proposed Brambling path
- Existing green area (remains with woodland through site) (proposed)
- Proposed shrub and herbaceous planting
- Proposed planting grass and lawn areas
- Proposed native hedge planting
- Proposed timber and herbaceous planting
- Proposed Fruit Tree
- Proposed tree
- Existing tree
- Existing tree to be removed

Note: remove with lines on the advice of an arboriculturist when deemed



Proposed Steps near Ramp
Conversation X kerb
140 x 255 Step tread
2 100p
Marshalls



Proposed ramp path -
Tarmac with block edging



Enclosed Woodland with
understorey



Woodland Understorey
mature EWI - Emergence



Amphitheatre with curved
gabion seating



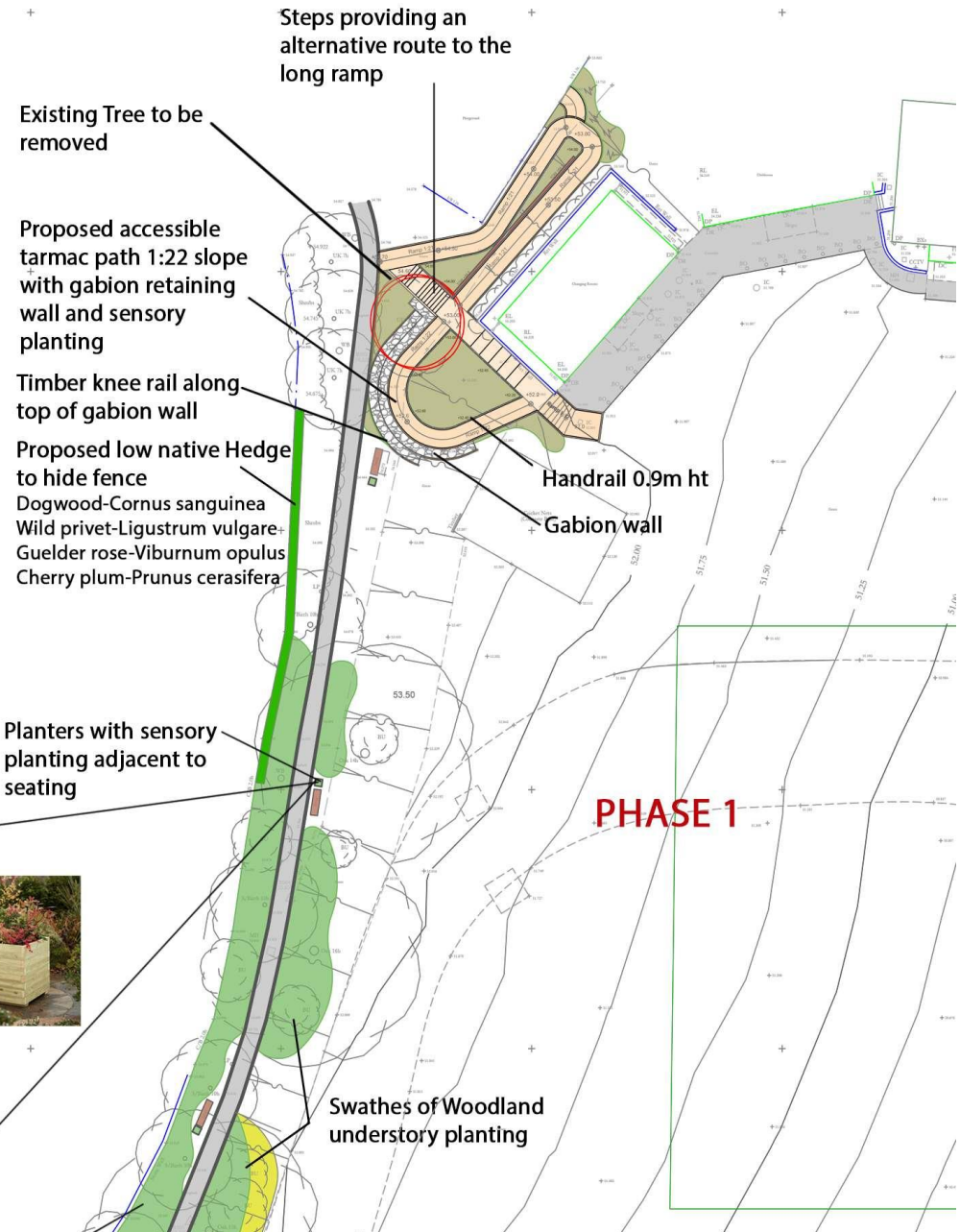
Timber sleeper steps



Native Hedging Options
Ligustrum vulgare
Cornus sanguinea
Prunus coccinea
Viburnum opulus

KEY

-  Proposed accessible path
 -  Existing grass area Overseeded with Woodland Mixture EW1 Emorsgate
 -  Proposed Shrubs and Herbaceous Sensory planting
 -  Proposed amenity grass over play mounds
 -  + Proposed native hedge planting
 -  Proposed shrubs and herbaceous planting
 -  Proposed Fruit Tree
 -  Proposed trees
 -  Existing trees
 -  Existing Ash tree removed
- Note:**
remove ash trees on the advice of an arboriculturist when diseased



Steps providing an alternative route to the long ramp

Existing Tree to be removed

Proposed accessible tarmac path 1:22 slope with gabion retaining wall and sensory planting

Timber knee rail along top of gabion wall

Proposed low native Hedge to hide fence
Dogwood-Cornus sanguinea
Wild privet-Ligustrum vulgare
Guelder rose-Viburnum opulus
Cherry plum-Prunus cerasifera

Handrail 0.9m ht

Gabion wall

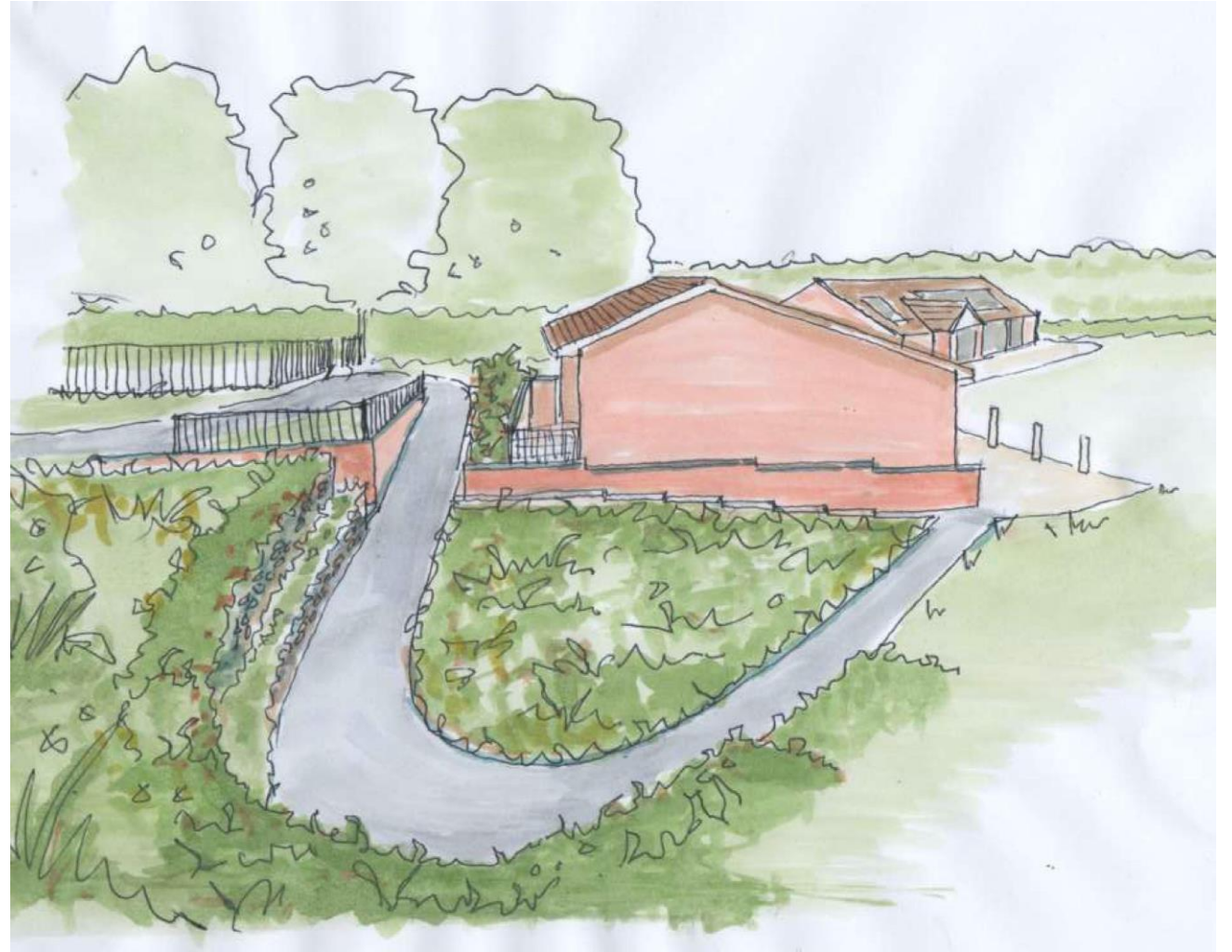
PHASE 1

Planters with sensory planting adjacent to seating

Swathes of Woodland understory planting

Sketch of proposed ramp

The accessible ramp will have an incline very similar to the path from Bishop's Hull Hill to the front of The Hub.



The Sensory Trail Timeline So Far - Overview

- Summer 2021 - Idea first discussed with the gardening team
- 2022
 - Feb – DG met with Paul B - VH&PFT happy to consider proposal
 - March Initial on site meeting to discuss concept
 - Initial fund raising for design concept started during Queen's Jubilee events
 - November Public Consultation
- 2023
 - Jan – Feb VH&PFT give approval for phase 1
 - PC to be lead and get lease for the land
 - Parish Council agreed to provide funds for initial professional fees

Overview (cont'd)

- 2023 March – October
 - Consultations & legal agreements
- October – December
 - Agreement from PC to commence detailed drawings
 - Appointments – detailed landscape & structural engineer
- 2024 January – completion of detailed drawings
 - February – schedule of work & tender documents (12th May returns)
 - March - Preparation of grant lists and wording

Next steps

- April - Proposal Hub will become the lead
 - *Legal work for sub lease for the Hub.
 - Underway, with Heads of Agreement drafted
 - *MoU – PC to Hub re ongoing maintenance
- Fund raising – grant applications
- Gathering plants, taking cuttings

- * To be discussed and decided at the Parish Council meeting

Any Questions?